

MetaSCOPE®

WEARABLE SCOPE

World's First Wearable Scope

MetaSCOPE is a revolutionary medical device that combines a high-performance magnifying camera with Eyes Up Display technology.



About MetaSCOPE

**Regain complete
freedom over
magnification
and
focus**

Wireless or
Wired
Headlight
(optional)

Camera

Headband

**You can adjust the
headband to fit your
head circumference
with a dial and pin
and tap.**

Display

**Images from the camera are instantly
seen in the wearable display**

MetaSCOPE®



No customization needed

MetaSCOPE fits everyone out of the box. Unlike loupes, no fitting is needed. You can also use MetaSCOPE with your existing glasses and clearly see the display.



Magnification

MS-1 : 2x – 5x / MS-2 : 4x – 9x



Zoom in and out

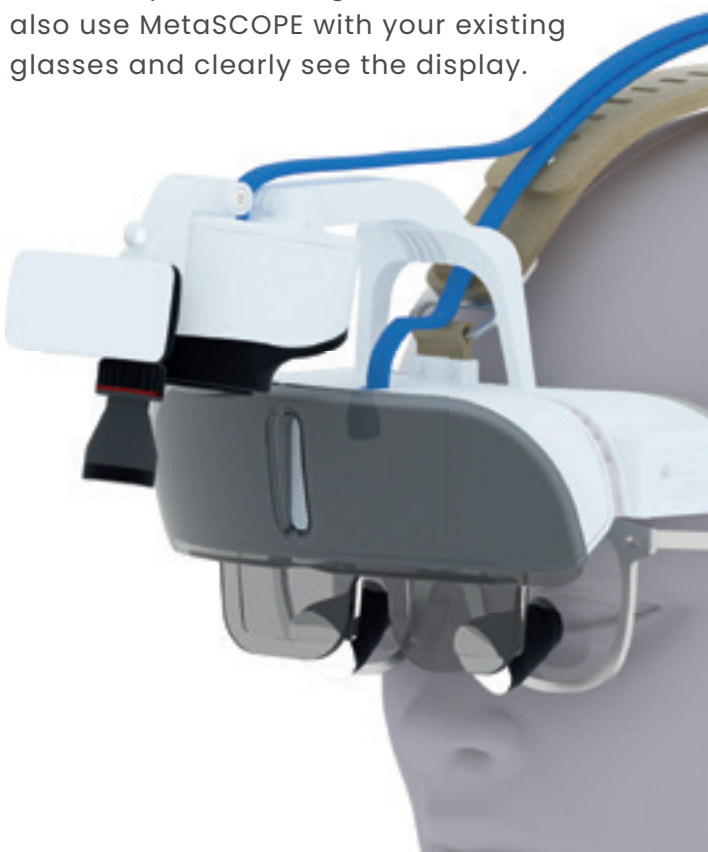
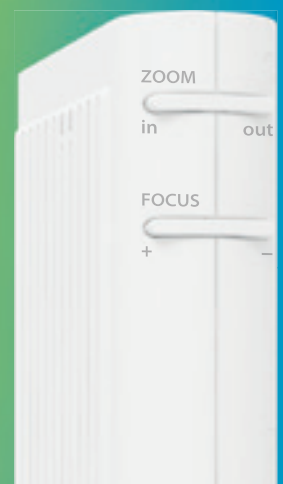
Choose your preferred magnification with the press of a button on the controller. Before starting the procedure, select the correct magnification.



Pinpoint focus

With 50 focus distances, you can precisely set the perfect focus distance with MetaSCOPE. Set the focus distance before the procedure by pressing the buttons on the controller.

MetaSCOPE Controller



Fields of application

With MetaSCOPE, all sorts of valuable experience assets can be turned into image data.



Surgery

Easy and diversified documentation: MetaSCOPE allows you to document your procedures easily with its included software. Unlike a regular camera, MetaSCOPE offers you the possibility to capture procedures from different angles, giving you more context and valuable information.



Training and Education

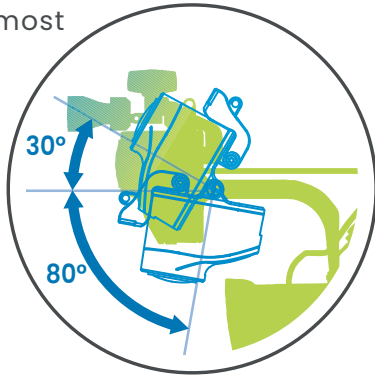
Best solution for live surgery and remote training: MetaSCOPE allows you to install up to 3 devices at different angles and be wirelessly streamed to a computer in real time, making it the perfect tool for training centers to share different aspects of your surgery.



Ergonomics

Ergonomic design

MetaSCOPE solves the ergonomic problem doctors face with microscopes and loupes, allowing them to operate in the most comfortable position.

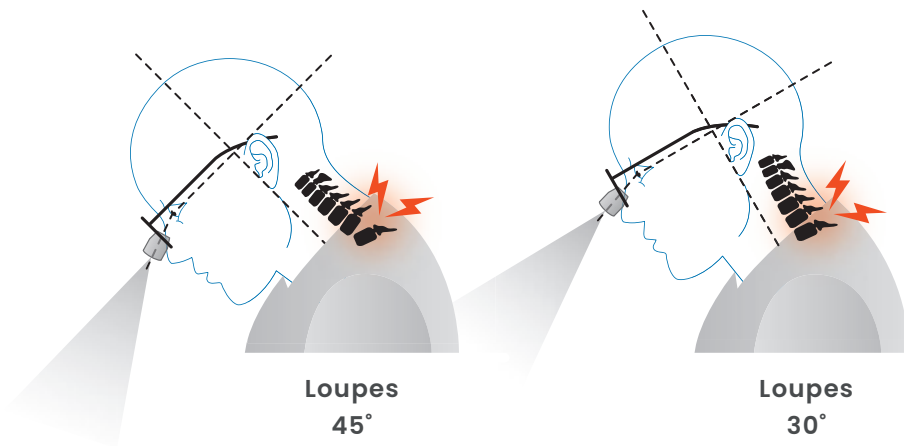


Reduced eye strain

With MetaSCOPE, there is no more looking into the eyepiece or lens. All you have to do is to comfortably look at the wide and sharp micro-display right in front of your eyes.

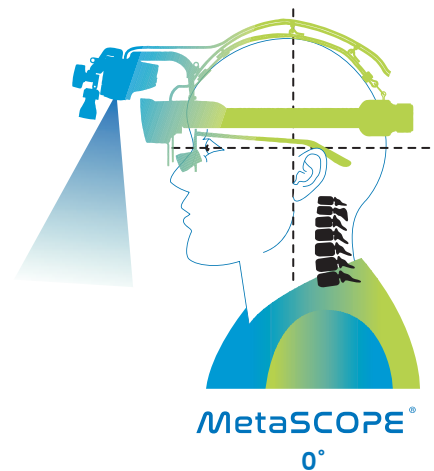
Straightened neck

Straighten your neck during the procedure and preserve your health with MetaSCOPE.



Loupes
45°

Loupes
30°



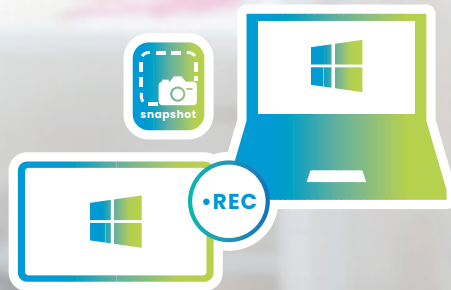
MetaSCOPE®
0°



Connected

Record

You can record and save your procedures easily with MetaSCOPE. Just press the record button on the app, and what you see through MetaSCOPE will be automatically saved onto your phone / computer.



App remote control

Using the remote control, you can manually adjust zoom, focus and also set autofocus.

Real-time multi-device streaming

Connect MetaSCOPE to a Windows device wirelessly and stream in real-time with near-zero latency on up to 3 devices simultaneously.

Take snapshots

Easily take snapshots with MetaSCOPE. Press the snapshot button on your device and the images will be automatically saved in your folder.

Revolutionary R&D tool

MetaSCOPE is the perfect tool for collecting data and images for your research.





Digitalize your experience :

MetaSCOPE opens up possibilities in data collection for AI and the Metaverse

In the Box

- MetaSCOPE with controller
- Headlight holder
- Shader
(3pcs: translucent 5% / 15% / 35%)
- Lens holders (2pcs)
- Head cushions
(3pcs: S / M / L sizes)
- Cable clips (4pcs)
- Remote controller
- Controller charging station & power adapter
- Battery power adapter
- Premium carrying case
- Wireless / Wired headlight (optional)

Tech Specs

- Model : MetaSCOPE (MS-1 / MS-2)
- Weight : 650g
- Size : 160 x 184 x 267 (mm)
- 1920 x 1080p FHD micro-display
- 16:9 aspect ratio
- 40° diagonal field of view
- Magnification : MS-1 : 2x – 5x / MS-2 : 4x – 9x
- Optical Image Stabilization system (OIS)
- Wi-Fi 802.11ac 5GHz
- Bluetooth
- Windows compatibility
- Real-time streaming
- Snapshot and recording
- Built-in 5,100 mAh rechargeable lithium-ion battery
- External 10,000 mAh rechargeable lithium-ion battery
- 35,000 lux wireless headlight (optional)
- 45,000 lux wired headlight (optional)



تهران، کارگر شمالی، نرسیده به جلال آل احمد، پلاک ۱۸۳۱، واحد ۳۵ | تلفن: ۰۲۱۴۲۸۶۸۰۰۰

MediThinQ Co., Ltd

Suite 106, 35 Silicon Park, Pangyo-ro 255 beon-gil, Bundang-gu, Seongnam-si, Gyeonggi-do, South Korea (13486)
T +82 31 8041 1470 E info@medithinq.com W www.medithinq.com

